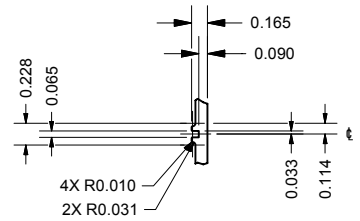
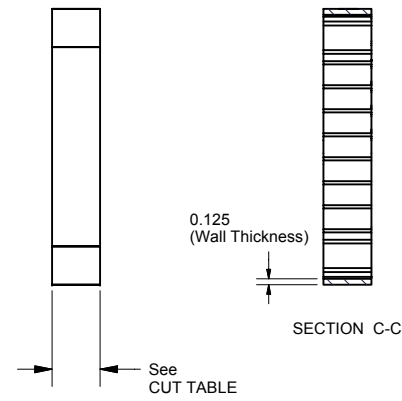
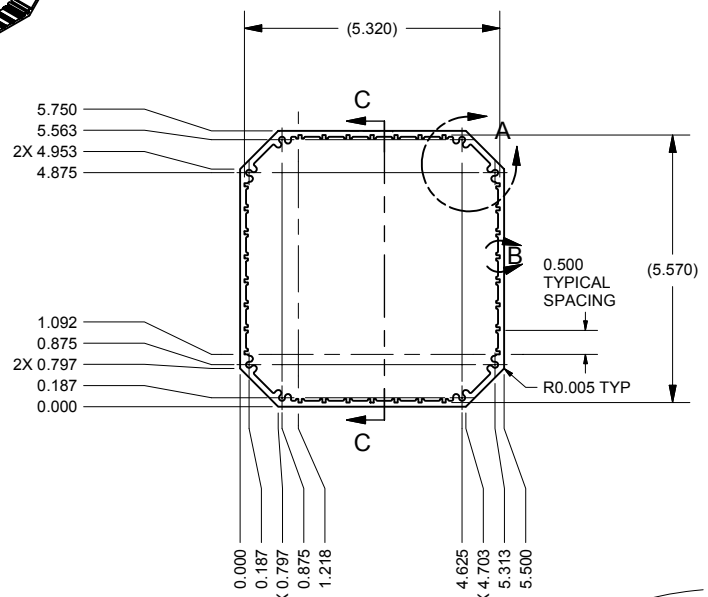
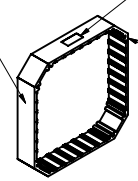


REVISION HISTORY				
ZONE	REV	DESCRIPTION	DATE	APPROVED
1	A	PRODUCTION RELEASE	12/29/2005	mloper
B1-2	B	ADDED TO TABLE 7810099	07/15/2008	MHL
1	C	Diamond Systems Approval	07/25/2009	DFastenu

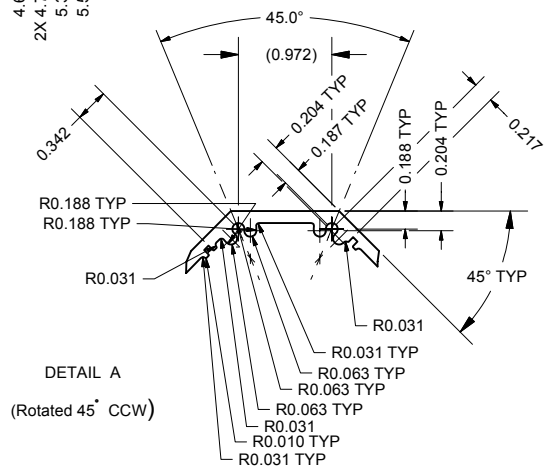
OUTSIDE SURFACE

Reference: SEE SHEET 2 of 2
Center Silk Screen on this surface.
Orient as shown.

MASK THIS SURFACE
and OPPOSITE SURFACE



DETAIL B



DETAIL A
(Rotated 45° CCW)

CUT TABLE			FINISH TABLE	
P/N	Overall Length	Cut Length	Alodine Color	Paint Color
7810001	1.730	1.605	CLEAR	BLACK
7810002	3.050	2.925	CLEAR	BLACK
7810003	4.375	4.252	CLEAR	BLACK
7810004	5.125	5.000	CLEAR	BLACK
7810005	7.125	7.000	CLEAR	BLACK
7810006	10.125	10.000	CLEAR	BLACK
7810021	1.730	1.605	CLEAR	BLACK
7810022	3.050	2.925	CLEAR	BLACK
7810024	5.125	5.000	CLEAR	BLACK
7810025	7.125	7.000	CLEAR	BLACK
7810026	10.125	10.000	CLEAR	BLACK
7810099	3.050	2.925	CLEAR	BLACK NO LOGO

NOTES:

- 1) MATERIAL: ALUMINUM; 6061 T-6.
- 2) Finish:
Chromate conversion etch & Alodine;
Color: SEE FINISH TABLE
Paint outside only, mask mounting surfaces as indicated.
Color: SEE FINISH TABLE
Type: HBW light texture
- 3) Break sharp edges and deburr.
- 4) Packaging: Package each completed part individually to preserve aesthetic appearance and prevent mechanical deformation during shipment and storage.
- 5) Permanently MARK with PART NUMBER and Current REV Letter in .12 minimum tall characters. Locate and orient approximately as shown.
- 6) Finished part must comply with the European RoHS directive (2002/05/EU)

TOLERANCES UNLESS OTHERWISE SPECIFIED:
DECIMALS
XX ± .03
X.XX ± .015
X.XXX ± .005
ANGULAR
XX ± .1°
XX.X ± .5°
FRACTIONAL
1/64

NOTICE TO ALL PERSONS RECEIVING THIS DRAWING,
Reproduction is forbidden without the written consent of Diamond Systems, Fremont, California. This drawing is only conditionally issued, and neither possession nor receipt thereof confers or transfers any right in or license to use the subject matter of the drawing or any design or technical information shown thereon, except for manufacture for Diamond Systems or for the manufacture under the corporation's written license. No rights are granted to reproduce this drawing or the subject matter thereof unless by written agreement or by written permission from the corporation.

DRAWN Mloper	1/15/2002
CHECKED	
DESIGNER D. McMillan	
APPROVED	
MFG	
QA	

DIAMOND SYSTEMS CORPORATION 8430-D CENTRAL AVENUE NEWARK, CA 94560	TITLE	CASE EXTRUSION Pandora
	SIZE DWG NO C 7810xxx	
DO NOT SCALE DRAWING		SHEET 1 OF 2